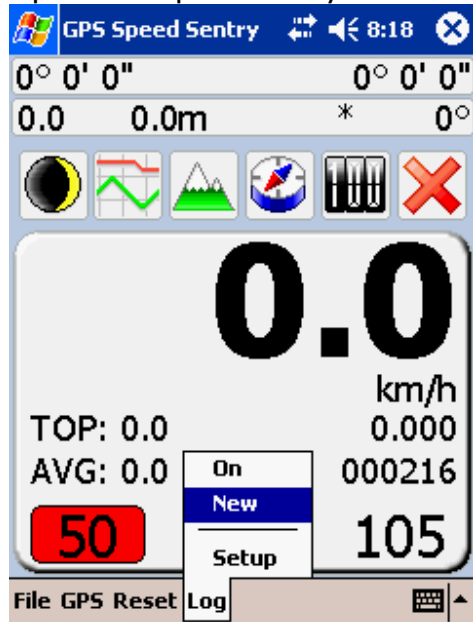
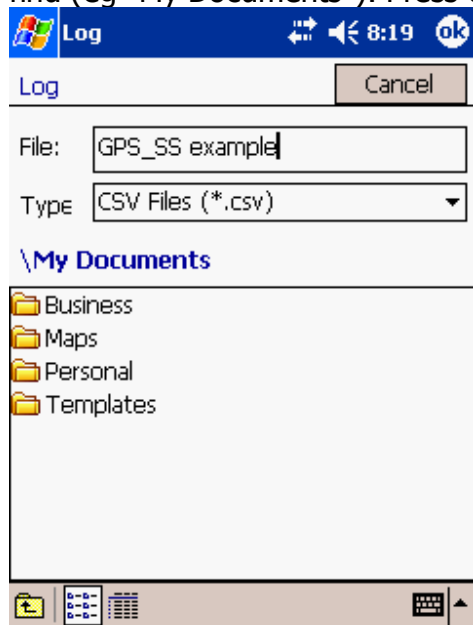


How to open a CSV file in Excel

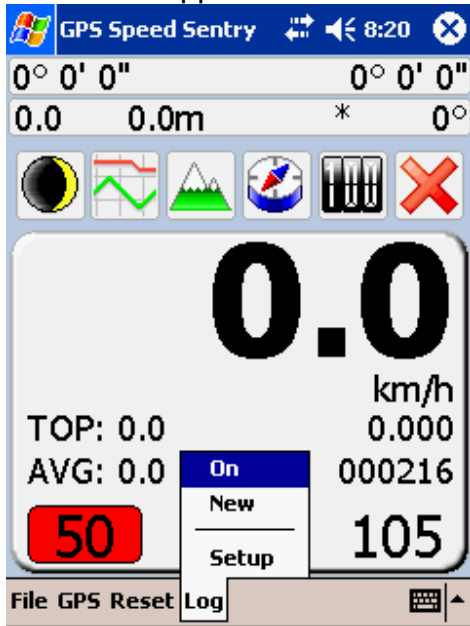
Open GPS Speed Sentry and select the Log>New menu option



Give the new file a name you will remember and select a directory that is easy to find (eg "My Documents"). Press okay to accept the name/directory.

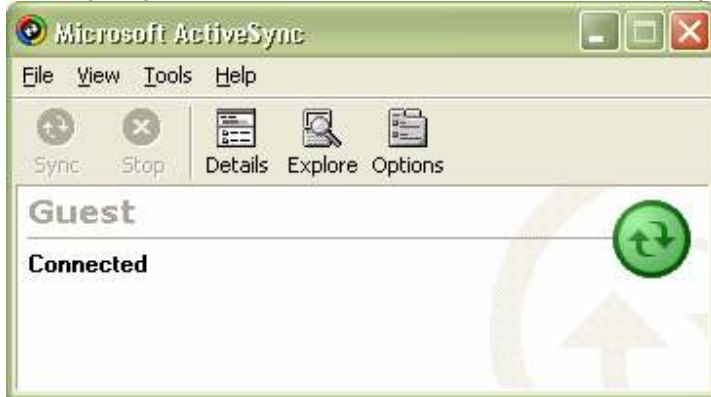


Now turn logging on to start logging your trip, use the Log>On menu option (a tick should appear next to the word "On")

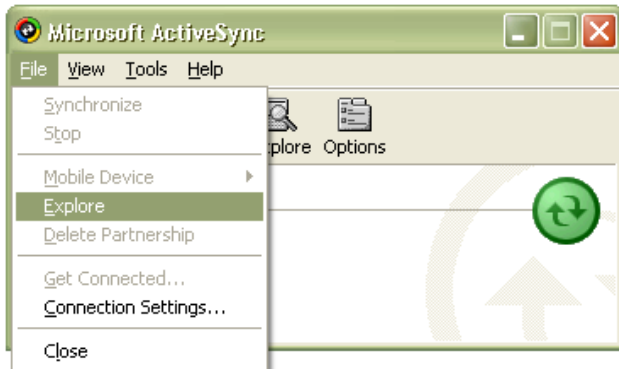


Once your trip is finished turn logging off by selecting the Log>On menu option again (the tick should disappear)

Now, put your device in it cradle and start ActiveSync



To retrieve the file use the File>Explore menu option on the ActiveSync dialog



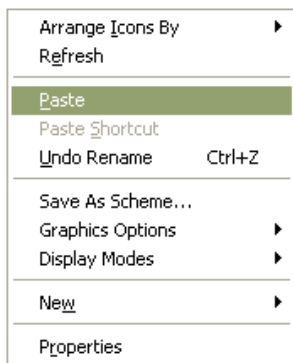
This will display the contents of your device; the default folder is "My Documents" on the device. Since our file was in the "My Documents" folder it appears in the dialog.



Now we need to move the file to the local computer. Right click the file and select "Cut"



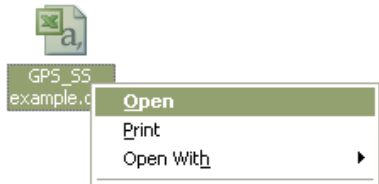
Now, on your local computer, paste the file somewhere (the desktop is good place). Right click and select "Paste". This will move the file from your device to your local computer.



The file is now on your local computer



To open the file double click it or right click it and select "Open"

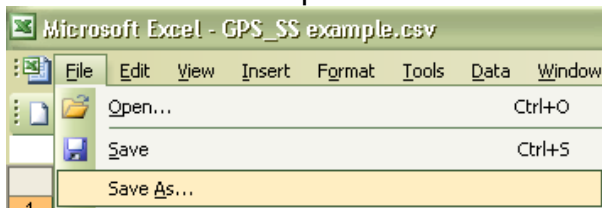


The file should then open in Excel

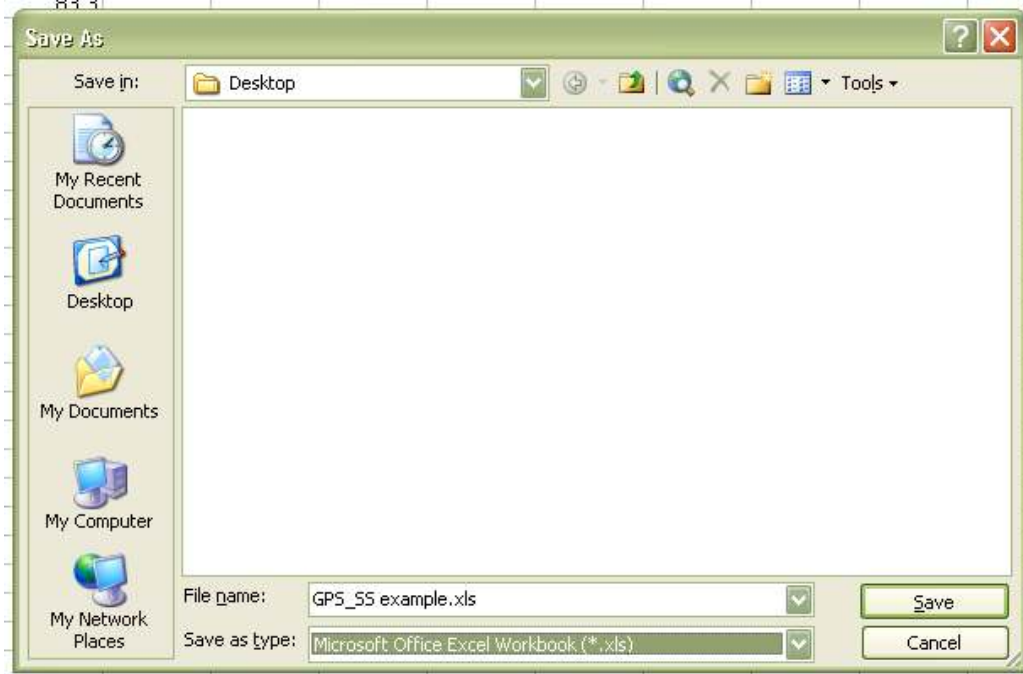
A screenshot of Microsoft Excel showing the 'GPS_SS example.csv' file open as a spreadsheet. The data is displayed in a table with columns labeled LAT_DEC, LONG_DEC, and SPEED_CUR.

	A	B	C	D
	LAT_DEC	LONG_DEC	SPEED_CUR	
1	-37.278942	175.32744	82.4	
2	-37.278882	175.327687	83.3	
3	-37.278822	175.327937	84	
4	-37.27876	175.328185	82.6	
5	-37.278702	175.328432	81.9	
6	-37.278647	175.328678	81.5	
7	-37.278595	175.328925	82.3	

To save as an Excel spreadsheet select the File>Save As menu in Excel



Select Microsoft Office Excel Workbook (*.xls) as your type and press the "Save" button



The CSV log file is now an Excel spreadsheet from which you can create graphs, reports and analyze the data.